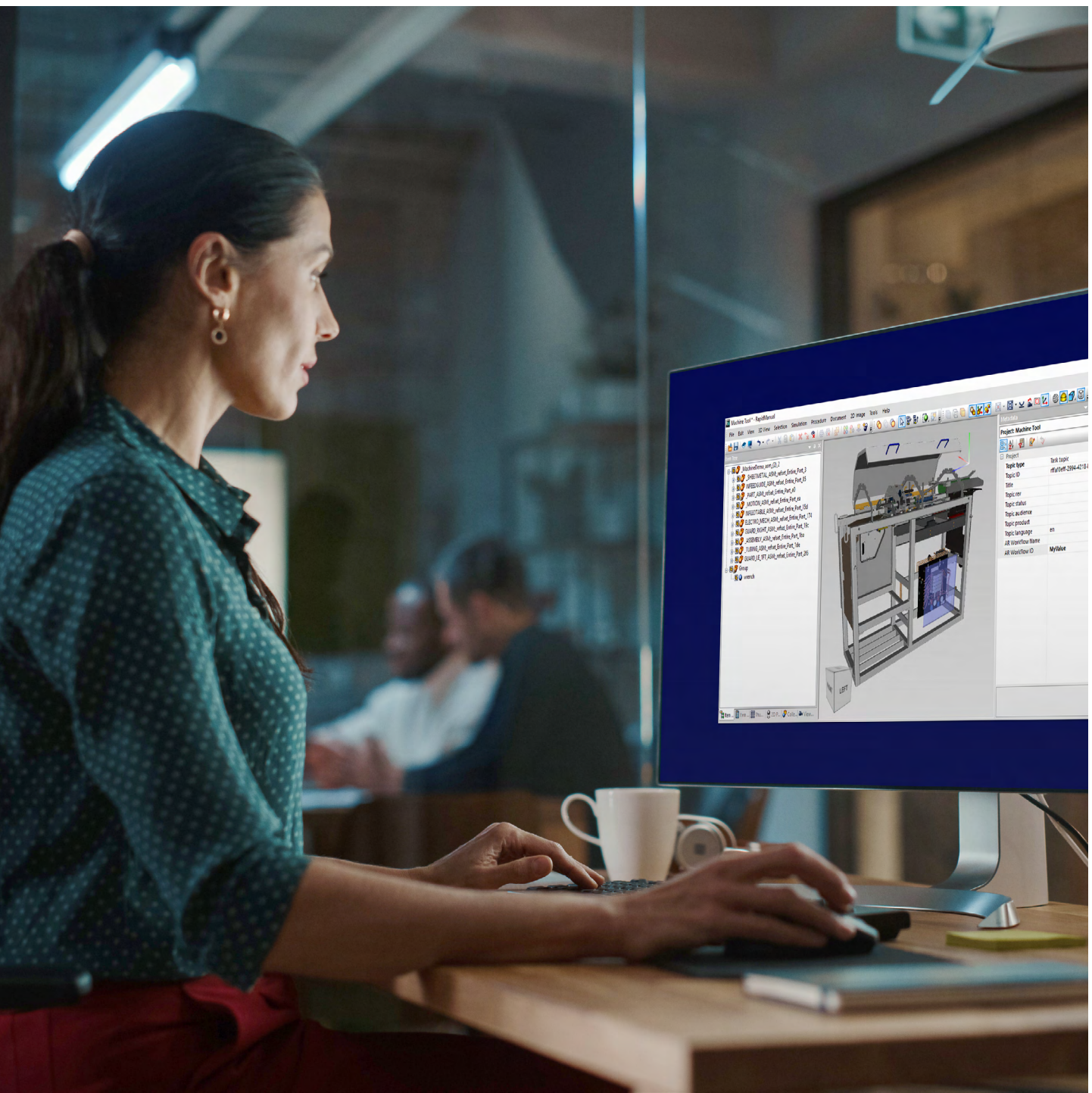


Frontline Spatial | Teamcenter

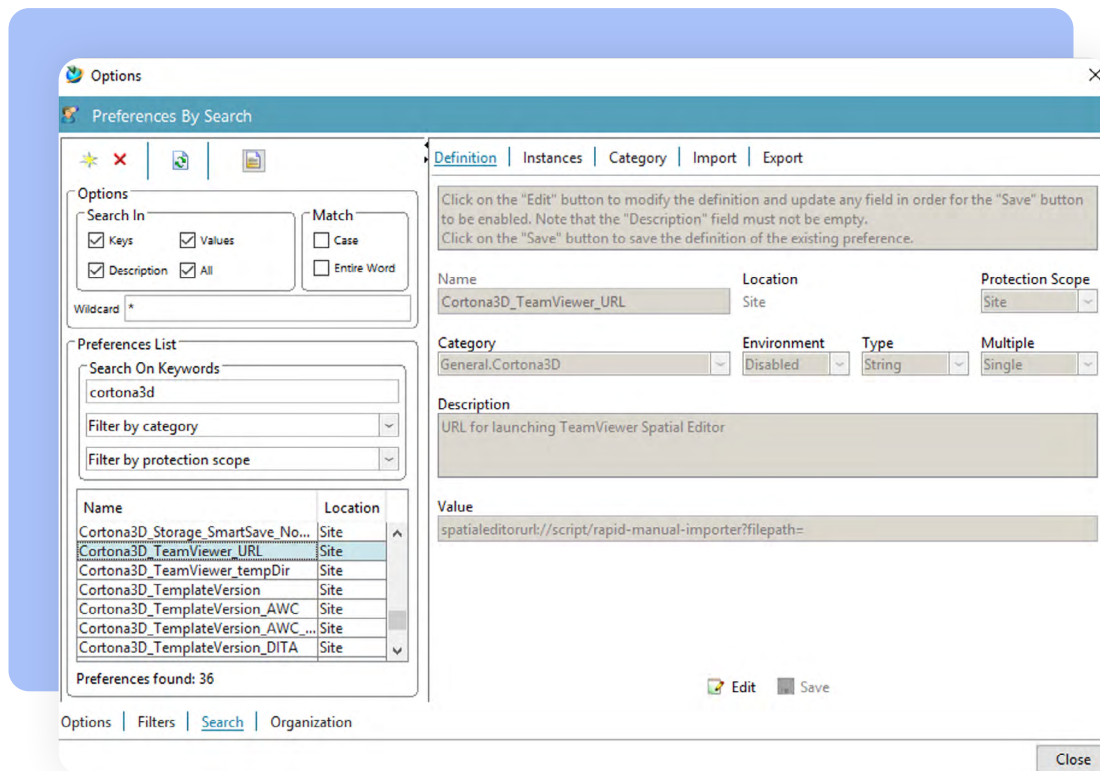
RapidManual integration manual



01 Setting up TeamCenter

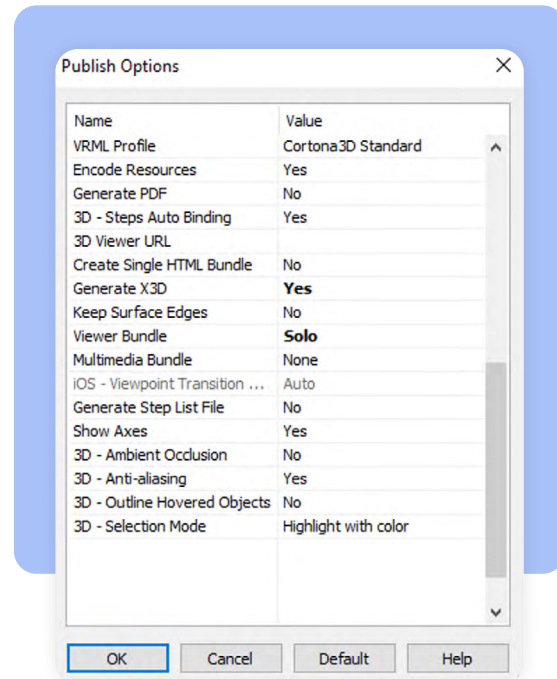
To set up RapidManual for usage with TeamViewer Frontline Spatial, create two preferences in TeamCenter:

Preference	Value
Cortona3D_TeamViewer_URL	spatialeditorurl://script/rapid-manual-importer?filepath=
Cortona3D_TeamViewer_tempDir	<p>An absolute path like C:\RapidManualVmbExports or C:\Temp. RapidManual will export VMB files to this folder, which will then be processed by the Frontline Spatial Editor.</p> <p>Note: These files will not be deleted automatically.</p>



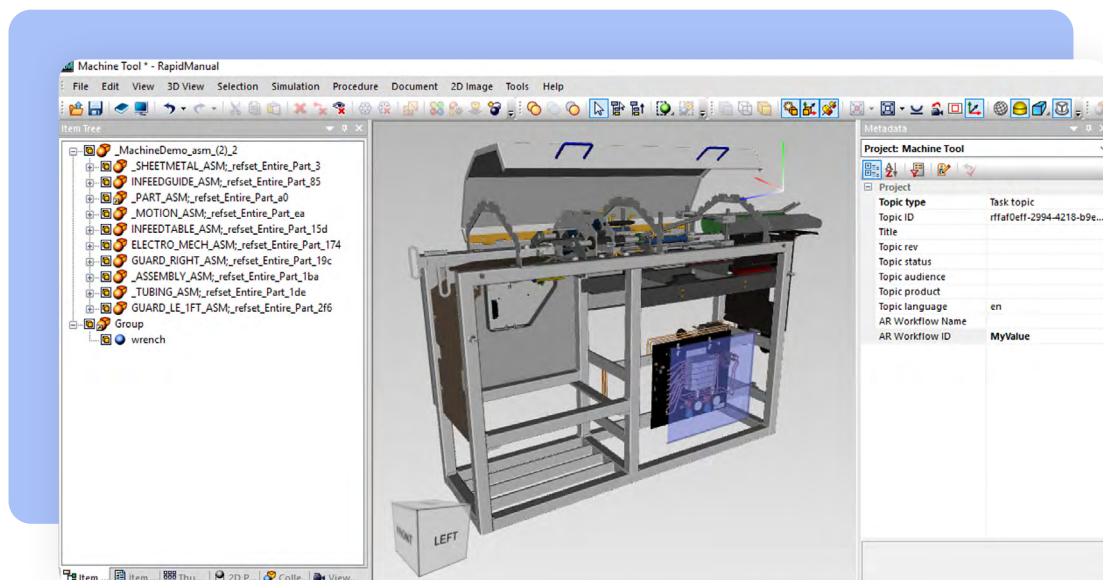
02 Setting up RapidManual

In RapidManual, enable X3D generation by selecting **Tools -> Publish Options -> Generate X3D**.



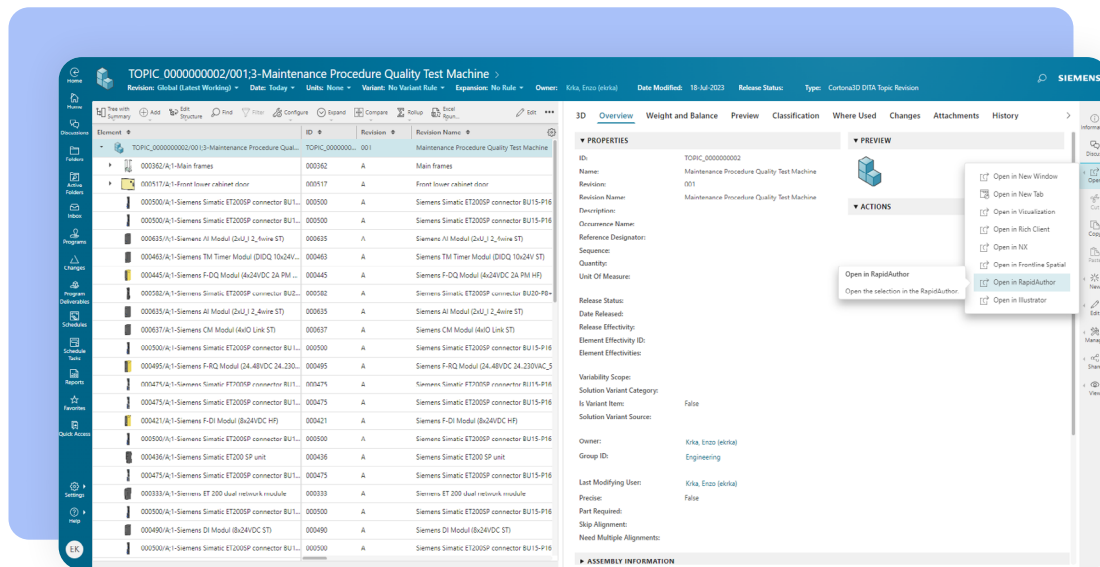
03 Preparing a RapidManual project for usage with Frontline Spatial

For each project to be opened in Frontline Spatial, the **AR Workflow ID** needs to be set in RapidManual in the **Metadata view**.

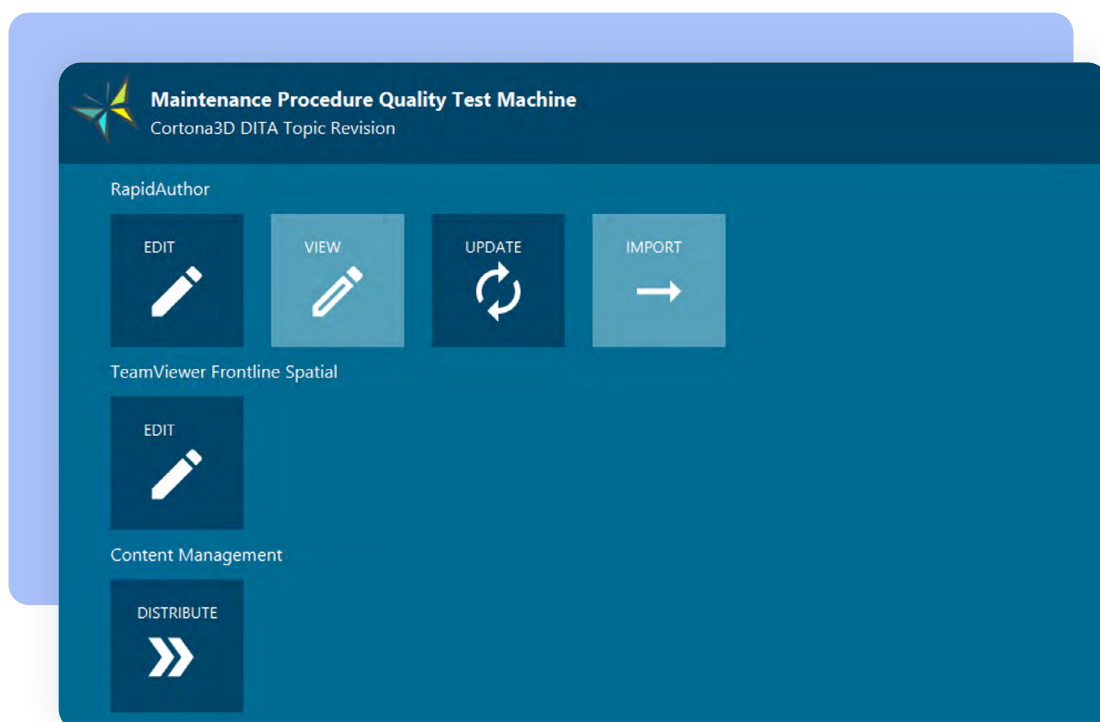


04 Opening Rapid Manual projects with Frontline Spatial Editor

1 In TeamCenter AWS, select **open in RapidAuthor**.

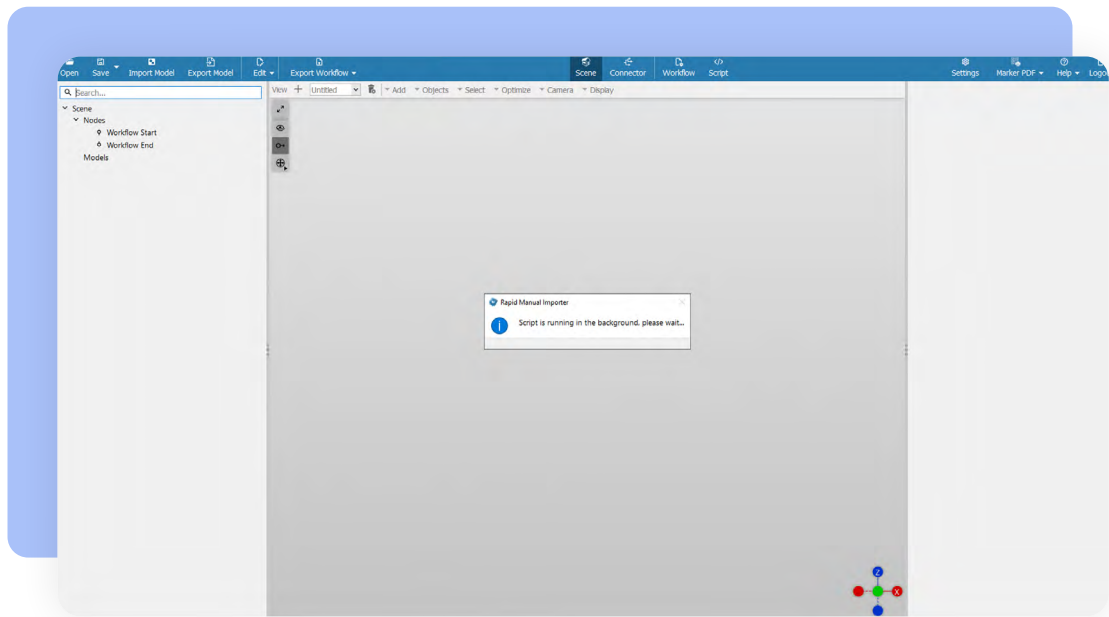


2 Select **Edit** in the **TeamViewer Frontline Spatial** row.



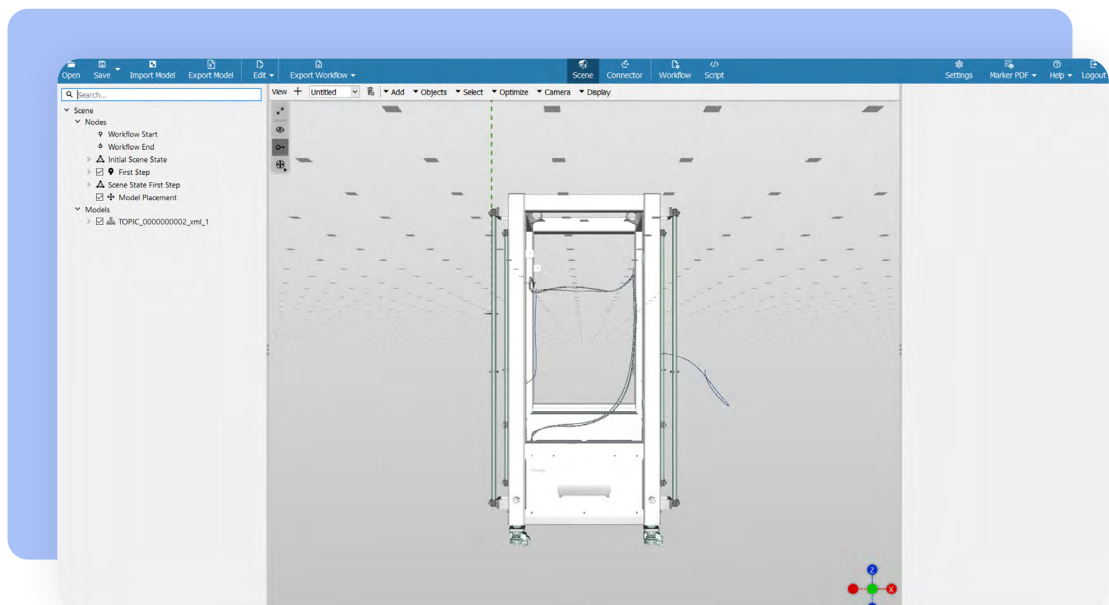
3

The Spatial Editor will display a Please wait dialog while the Reality BOP file is being processed and turned into a Frontline Spatial workflow.



4

Once the message disappears, the processing is done, and you can publish the workflow to your Frontline Command Center using the **Export Workflow** button.

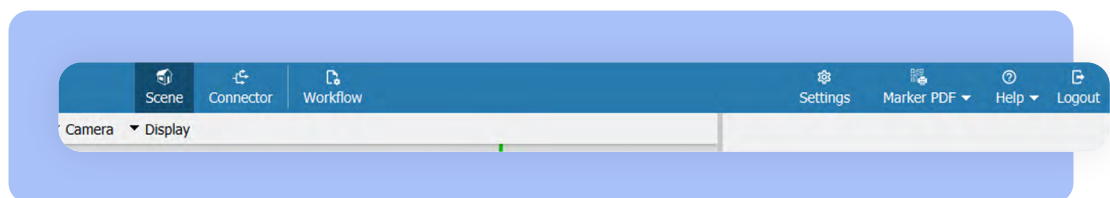


05 FAQ

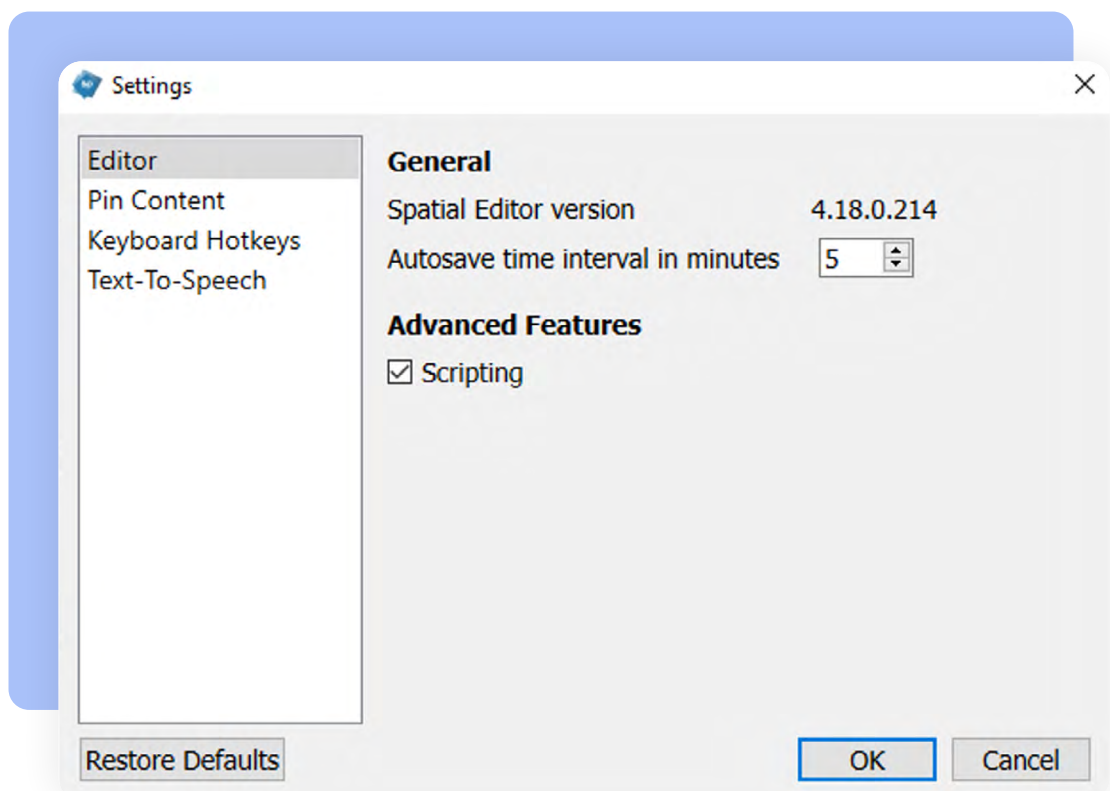
The resulting workflow does not look as expected. Are there any log files for analysis?

The processing logs will be available in the output of the Script window. You can enable the Script window of the Spatial Editor as described below.

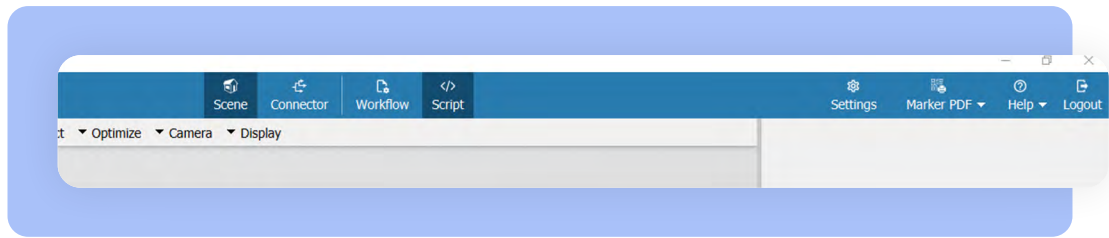
1 Click on **Settings** on the right.



2 Enable **Scripting**.

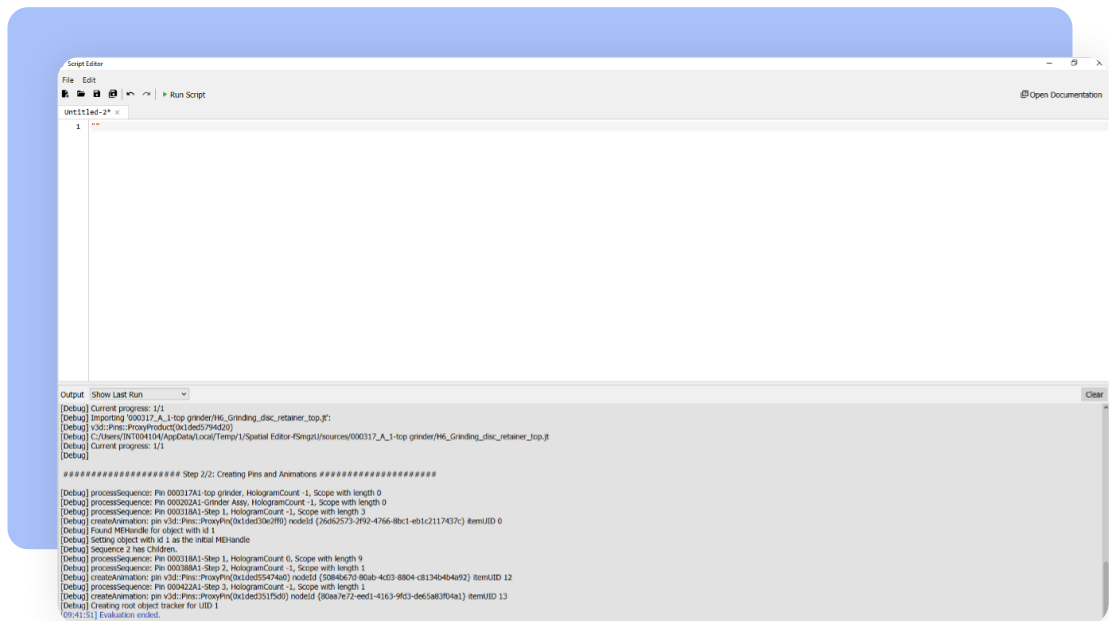


3

Click on **Script**.

4

A separate window will open, with the output of the Reality BOP processing at the bottom.





About TeamViewer

TeamViewer provides a Digital Workplace platform that connects people with technology – enabling, improving and automating digital processes to make work work better. In 2005, TeamViewer started with software to connect to computers from anywhere to eliminate travel and enhance productivity. It rapidly became the de facto standard for remote access and support and the preferred solution for hundreds of millions of users across the world to help others with IT issues. Today, more than 640,000 customers across industries rely on TeamViewer to optimize their digital workplaces - from small to medium sized businesses to the world's largest enterprises - empowering both desk-based employees and frontline workers. Organizations use TeamViewer's solutions to prevent and resolve disruptions with digital endpoints of any kind, securely manage complex IT and industrial device landscapes, and enhance processes with augmented reality powered workflows and assistance - leveraging AI and integrating seamlessly with leading tech partners. Against the backdrop of global digital transformation and challenges like shortage of skilled labor, hybrid working, accelerated data analysis and the rise of new technologies, TeamViewer's solutions offer a clear value add by increasing productivity, reducing machine downtime, speeding up talent onboarding, and improving customer and employee satisfaction. The company is headquartered in Göppingen, Germany, and employs more than 1,800 people globally. In 2024, TeamViewer achieved a revenue of around EUR 671 million. TeamViewer SE (TMV) is listed at Frankfurt Stock Exchange and belongs to the MDAX. Further information can be found at www.teamviewer.com.

www.teamviewer.com/support

TeamViewer Germany GmbH
Bahnhofplatz 2 73033 Göppingen Germany
+49 (0) 7161 60692 50

TeamViewer US Inc.
5741 Rio Vista Dr Clearwater, FL 33760 USA
+1 800 638 0253 (Toll-Free)

Stay connected

www.teamviewer.com

Copyright © 2025 TeamViewer Germany GmbH and TeamViewer US. All rights reserved.